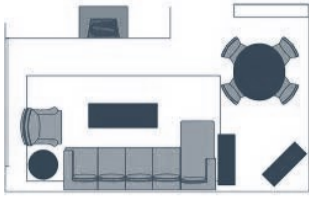


# 14 TRIGGERS FOR DATA CENTRE CO-LOCATION

Consider 3 key areas that may force a review of the status quo for the computer room or data centre

S  
I  
T  
U  
A  
T  
I  
O  
N

## What about the physical location of the existing provision?



Is there pressure from Facilities to **repurpose the existing space**?



Is the organisation facing an **office move or refurbishment** requiring new provision for the computer room?

Could any proposed changes in **cost centre allocation** force IT to absorb the cooling and power costs?



Does a pending **corporate merger or acquisition** have implications on IT provision and requirements?



R  
I  
S  
K

## Is the current provision sufficiently resilient for purpose?



Have **downtime or availability issues** raised corporate awareness of the need for enhanced in-house resilience?



Have recent **adverse external factors** increased awareness of environmental risk eg weather or security event?

Are the **capital costs and necessary upgrades** to improve resilience, connectivity and compute power driving the need for review?



Is IT being asked to focus greater effort on **connecting IT service development** to business drivers?



Does the in-house facility provide sufficiently agile access to managed service providers and public cloud platforms for the **hybrid strategy**?



Is there a need for an additional site for **effective Disaster Recovery** or site diversity?

Could current provisions cause concerns with **Stakeholders, Clients or Compliance** over fit for purpose?



Is the business constrained by **limited carrier density** to the in-house facility?



C  
A  
P  
A  
C  
I  
T  
Y

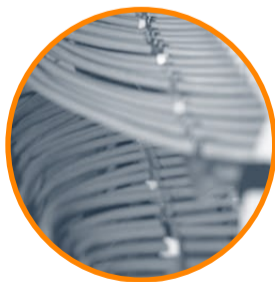
## Is the current provision able to cope with increased demand from the business?



Is the organisation facing capacity challenges caused by an impending change or development such as **enterprise-wide critical application** or higher density hardware refresh?



Are existing **physical and power limitations** threatening to constrain business growth or new services?



### A best-fit solution

When the need for additional compute power and organisational change demand increased capacity, availability, flexibility, connectivity and scalability from the data centre, it is time to assess whether retaining an in-house facility warrants the risk and effort required to build and maintain it.

Which is when placing the infrastructure in a purpose-built, well-managed, carrier-neutral, highly **secure and resilient dedicated facility with direct connections to public cloud** becomes the preferred, the most effective and the most efficient option, allowing the IT function to focus on the business itself.

